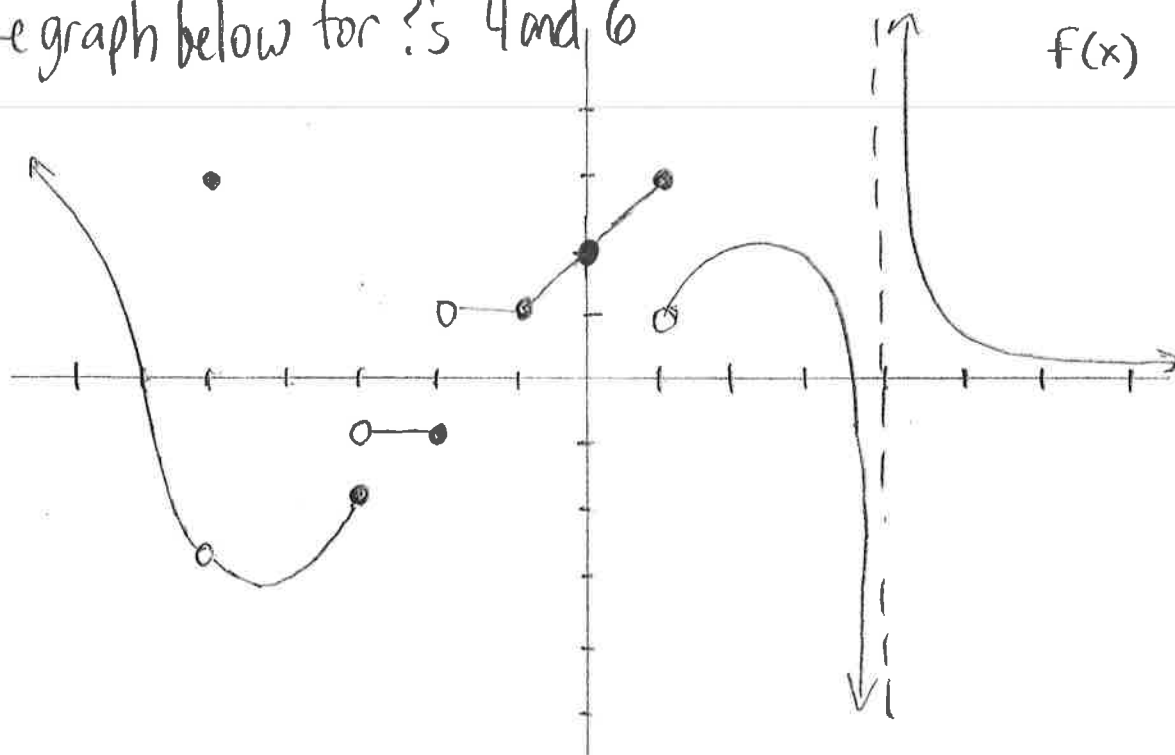


use the graph below for #'s 4 and 6

4



a)  $\lim_{x \rightarrow -5} f(x) =$

b)  $\lim_{x \rightarrow -1} f(x) =$

c)  $\lim_{x \rightarrow -3^+} f(x) =$

d)  $\lim_{x \rightarrow 4} f(x) =$

e)  $\lim_{x \rightarrow 1} f(x) =$

f)  $\lim_{x \rightarrow 2^-} f(x) =$

5) list the conditions for continuity at a point

① \_\_\_\_\_

② \_\_\_\_\_

③ \_\_\_\_\_

6) tell whether  $f(x)$  is continuous at the following points. Use the 3 conditions to guide your solution.

a) when  $x = -5$

b) when  $x = -2$

c) when  $x = 0$